

ANDERSEN JUNIOR HIGH SCHOOL

Standard Operating Procedures

****Updated 1/15/21****



AJHS CORE VALUES & EXPECTATIONS

AJHS CORE VALUES

#JAGS

Jaguars work hard and learn from our mistakes.

A ccept and value everyone.

G ive & acknowledge our talents freely.

S how pride in our school!



STANDARD SAFETY EXPECTATIONS

#JAGS

Jaguars work hard and learn from our mistakes.

A ccept and value everyone.

G ive & acknowledge our talents freely.

S how pride in our school!

A ccept and value everyone.

- Intentionally coughing on others, touching others, pretending to have COVID19, falsely accusing people of having COVID19 or in any way disrespectfully joking about COVID19 will result in disciplinary action.
- As a school, we are going to be respectful and mindful of our community's feelings and safety.



STANDARD SAFETY EXPECTATIONS

- Mask are required at all times while on AJHS property. **Student disregard of mask policy will result in suspension.**
 - If a student arrives without a face covering, they will be directed to the front office or health office to receive a mask.
 - **[Exception = sitting and actively and eating lunch]**
- All staff, students, and visitors will use hand sanitizer when they enter or exit any classroom or building on campus.
 - Hand sanitizer has been placed at all locations.
- Keep 6 feet of distance from others as much as possible.
- **Do NOT share food.**
- Use the directional arrows in the hallways to avoid bumping into others.
- All staff and students should have a personal water bottle and only fill them at designated areas on campus.
 - Water fountains on campus will not be accessible [see drinking water slide]



DRESS CODE

- All CUSD policies regarding dress code will be enforced, including inappropriate face coverings. Please view student handbook for additional information.
- If a student is out of dress code, any staff member may send them to the front office to speak with an administrator.
- Dress code will always be addressed with dignity and respect.
- If a student is in a classroom, teacher will make note on the back of the health office pass and direct students to the front office.
- Students will be given opportunity to address their dress code violation and clean clothes will be made available for student if they do not have them.

TRANSPORTATION

- Masks must be worn at all times on all District transportation.
- Students will not be able to socially distance on school busses, but all efforts will be made to socially distant students when possible.
- Students must have their ID visible when boarding after school and will only be allowed on bus they are assigned to.
- CUSD transportation will be made available for extracurricular activities when possible.



HEALTH PROTOCOLS

CUSD STUDENT COVID-19 EXCLUSION GUIDELINES

- Student(s) may be excluded for the reasons listed below.
- When students are off campus, They will have access to the curriculum through Google Classroom. Families will not be allowed to pickup items from campus.

Exclude **symptomatic** students who have **ANY ONE** of the following: fever of 100.4 or above, new onset or worsening cough, shortness of breath not attributable to underlying cause (e.g., asthma), diarrhea, vomiting, chills, congestion or runny nose, headache, muscle or body aches, nausea, new loss of taste or smell, sore throat. *Students with a documented medical condition by a licensed healthcare provider should not be excluded if the symptom(s) are related to their condition.*

Exclude **asymptomatic** students who have had a **positive COVID-19 test OR live with someone diagnosed with COVID-19 or are pending COVID-19 test results.**

Exclude **siblings** of students who have had a **positive COVID-19 test. Do not exclude** siblings if there has only been reported symptoms.



CUSD STUDENT COVID-19 EXCLUSION GUIDELINES

- Student(s) may return to campus once they have met the requirements listed below. (1/3)

Student Has Been Evaluated by Healthcare Provider

COVID-19 Testing Results

Symptomatic –

Positive Lab Test

Fever free for 24 hours without fever reducing medications AND improvement of symptoms AND 10 days have passed since symptoms first appeared.

*If the date of symptom onset is unknown, then use the date of COVID-19 test collection.

Asymptomatic –

10 days have passed since date of COVID-19 test collection.

*Extension of isolation is not routinely recommended if an individual is retested within 3 months of onset of symptoms or date of first positive test while asymptomatic.

Negative Lab Test

Fever free for 24 hours without fever reducing medications AND improvement of symptoms.

Non-COVID Diagnosis

Return to school in accordance with the [AZDHS Communicable Disease Resource Guide](#).



CUSD STUDENT COVID-19 EXCLUSION GUIDELINES

- Student(s) may return to campus once they have met the requirements listed below. (2/3)

COVID Symptoms Have Not Been Evaluated by Healthcare Provider

If a student has **ANY ONE** of the following: diarrhea, vomiting, chills, congestion or runny nose, headache, muscle or body aches, nausea, sore throat
May return to school when: symptoms have resolved within first 24 hours AND have remained gone for an additional 24 hours without the use of medication.

If **ANY** symptom(s) last more than 24 hours: students may return to school when fever free for 24 hours without fever reducing medications AND improvement of symptoms for at least 24 hours AND 10 days have passed since symptoms first appeared.

If a student has **ANY** one of the following symptom(s): a fever of 100.4 or above, new onset or worsening cough, shortness of breath not attributable to underlying cause, loss of taste or smell. **They may return to school when ALL symptoms have improved without the use of medication AND 10 days have passed.**

A negative lab test is optional in place of 10 days. *A licensed healthcare provider note stating a student does not have COVID, without an actual test result or alternate diagnosis is not acceptable for return.

*If students return to school with the same symptoms, they were originally sent home with, they will be required to follow the 10-day exclusion guidelines.



CUSD STUDENT COVID-19 EXCLUSION GUIDELINES

- Student(s) may return to campus once they have met the requirements listed below. (3/3)

————— **No Symptoms and Lives with Person Diagnosed with COVID-19 or Primary Exposure** —————

Separate yourself from the ill person. Return to school when your quarantine period has passed since last exposure AND no symptoms are present.

*If symptoms develop during your quarantine period: Stay home AND follow [Maricopa County Home Isolation Guidelines](#).



CUSD STUDENT COVID-19 EXCLUSION GUIDELINES

Length of quarantine

In accordance with new CDC guidelines, the 14-day quarantine period may end after 10 days without testing if no symptoms have occurred or after 7 days if no symptoms have occurred and a documented negative result has been provided to the school. If choosing to return after 7 days, the test sample must have been collected at least 5 days after exposure. Send-off PCR tests are preferred but rapid PCR or antigen tests are acceptable.

If you are exposed again during quarantine, the period must start over again. If you develop symptoms or test positive for COVID-19 during the quarantine period, you must follow the instructions for isolating yourself and notify the school.



CUSD STAFF COVID-19 EXCLUSION GUIDELINES

- Staff may be excluded for the reasons listed.
- When teachers are absent (regardless of reason) their class will be prepared by a substitute teacher.



CUSD EMPLOYEE COVID-19 EXCLUSION GUIDELINES

Exclude **symptomatic** staff who have **ANY ONE** of the following: fever of 100.4 or above, new onset or worsening cough, shortness of breath not attributable to underlying cause (e.g., asthma), diarrhea, vomiting, chills, congestion or runny nose, headache, muscle or body aches, nausea, new loss of taste or smell, sore throat.

RETURN TO WORK REQUIREMENTS

Staff Has Been Evaluated by Healthcare Provider

COVID Diagnosis				Non-COVID Diagnosis
Positive Lab Test			No Lab Test	
Symptomatic – Fever free for 24 hours without fever reducing medications AND improvement of symptoms AND 10 days have passed since symptoms first appeared.	Asymptomatic – 10 days have passed since date of COVID-19 test collection.	Symptomatic - Negative Lab Test Fever free for 24 hours without fever reducing medications AND improvement of symptoms.	No Lab Test Fever free for 24 hours without fever reducing medications AND improvement of symptoms AND 10 days have passed since symptom onset.	Return to work in accordance with the AZDHS Communicable Disease Resource Guide .
<small>*If the date of symptom onset is unknown, then use the date of COVID-19 test collection. *See Maricopa County Home Isolation Guidelines for more detailed information.</small>				

COVID Symptoms Have Not Been Evaluated by Healthcare Provider

Return to work when fever free for 24 hours without fever reducing medications AND improvement of symptoms for at least 24 hours AND 10 days have passed since symptoms first appeared. *A negative lab test is optional in place of 10 days.

*If a symptom above is gone within first 24 hours of appearing and remains gone with no medication staff may return to work 24 hours later.

No Symptoms and Lives with Person Diagnosed with COVID-19

In some cases may continue working and monitor for symptoms, check with supervisor. If symptoms develop within 14 days of exposure: Stay home and follow [Maricopa County Department of Public Health Isolation Guidelines](#).

*These recommendations are current as of 8/17/20. Recommendations are subject to change as the situation evolves. For more information, please visit [maricopa.gov/COVID19](#).

CLASSROOM GUIDELINES (STAFF)

- Teachers will follow the following guidelines when sending students to the health office:
- Teachers must **CALL** the nurse before sending students
- Teachers will receive a printout of this for their classroom

CUSD Teacher Guide for Sending Students to the Health Office

HANDLE IN CLASS

- Old Injury or Injury Sustained off Campus
- Minor Cut, Scrape, Abrasion or Sliver
- Minor Stomachache (not resolved after 10 min. of rest and bathroom use)
- Hunger
- Mosquito Bites
- Minor Nosebleed
- Chapped Lips
- Loose/Lost Tooth/ Brace care (no wax available)
- Dress Code/ dirty/ muddy clothing/ broken shoes/ untied shoes
- Hygiene concerns/feminine concerns/cramps
- Minor eye irritation/Contact Lens issue
- Nits (no live lice present)
- TLC
- SEE REVERSE FOR ADDITIONAL GUIDANCE**

SEND TO HEALTH OFFICE

- Significant New Injury: Head, Eye, Bone, or visible swelling
- Deep Cut or Heavy Bleed from Cut or Wound
- Severe abdominal Pain
- Chronic Illness: Diabetes, Asthma
- Allergy: Nut/Food, Bee, Environmental
- Heavy or Continuous Nosebleed (nosebleed greater than 10 min)
- Earache (severe discomfort and/or fever)
- Tooth ache or braces pain
- Rash with/without fever and/or signs of illness or behavioral changes, uncomfortable or Itchy
- Bee Sting, Spider, Scorpion bites or worsening/allergic type reaction to previous bug bites.
- Pink Eye (red, itchy, and purulent draining eyes)
- Live Lice

MASK STUDENT & SEND TO HEALTH OFFICE

- Visual: flushed cheeks, rapid breathing or difficulty breathing (without recent physical activity), paleness, blue lips or nails, fatigue, or coughing?
- Patients with COVID-19 may experience the following signs or symptoms over the course of the disease: **New onset cough or shortness of breath or fever of 100.4 (or higher) OR any of the following:**
 - Chills
 - Fatigue
 - Muscle or body aches
 - Headache
 - New loss of taste or smell
 - Sore throat
 - Congestion or runny nose
 - Nausea or vomiting
 - Diarrhea



CLASSROOM GUIDELINES (STAFF)

- Teachers will follow the following guidelines when sending students to the health office:

CUSD Teacher Guide for Sending Students to the Health Office

HEALTH OFFICE RESTROOMS ARE FOR SICK STUDENTS ONLY.

PLEASE CALL THE HEALTH OFFICE FIRST – DO NOT SEND STUDENTS UNTIL INSTRUCTED TO DO SO.

- **Old Injury or Injury Sustained Off Campus:** Check for swelling and how student presents himself/herself. Send Health Office the name of the student and he/she will call parent to get more information.
- **Minor Cut, Scrape, Abrasion or Sliver:** Clean area with soap and water and apply band aide.
- **Minor Stomachache and/or Hunger (Not resolved after 10 min. of rest and bathroom use):** Check to see if student had breakfast, if no breakfast, give crackers.
- **Mosquito Bites:** Wash area with soap and water, apply calamine lotion with cotton ball.
- **Minor Nosebleed:** Pinch bridge of nose with Kleenex/tissue. If nosebleed lasts more than 10 minutes, contact Health Office.
- **Chapped Lips:** Give student Q-tip to apply Vaseline.
- **Loose/Lost Tooth/Brace care (no wax available):** Remind student to keep hands out of mouth for loose tooth, lost tooth – have student put tooth in zip lock baggie, go to restroom and rinse mouth with water. Contact custodial services to have restroom cleaned.
- **Dress Code/dirty/muddy clothing/broken shoes/ untied shoes:** Contact Health Office for site specific direction.
- **Hygiene concerns/Feminine Concerns/Cramps:** If severe, call Health Office. Will be advised whether student needs to be seen.
- **Minor Eye Irritation / Contact Lens Issue:** Contact Health Office for direction.
- **Nits (No live Lice present):** Contact Health Office for direction.
- **Students with Anxiety/Emotional:** Contact site Counselor. If not available, call the front office for assistance.



The background features a complex geometric pattern of overlapping triangles in shades of blue, grey, and gold. A solid green horizontal bar is positioned at the bottom of the image. The text 'BEFORE SCHOOL' is centered in a white, sans-serif font, with a thin white horizontal line underneath it.

BEFORE SCHOOL

BEFORE SCHOOL

- Masks are required at all times while on AJHS property.
 - Student disregard of mask policy, will result in suspension.
- Students must be seated and actively eating to remove mask.
- Breakfast will be served in the cafeteria. Students may eat in the cafeteria or at tables outdoors.
- Students may visit with friends, outside, in small groups, and must stay spaced out on the Jag Pad or in the Rose Garden.
- They must also avoid physical contact with other students.

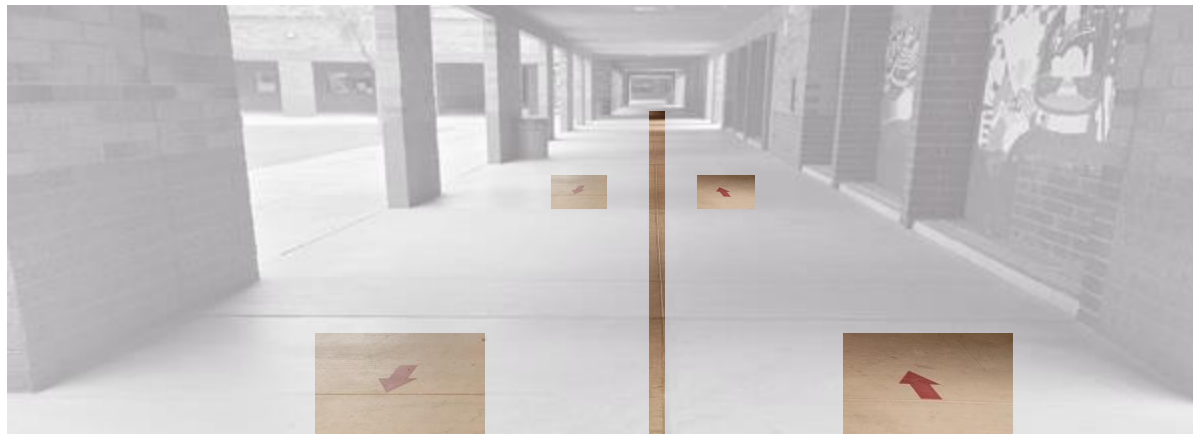




PASSING PERIOD /
HALLWAYS

HALLWAY PROCEDURES & EXPECTATIONS

- Throughout all main hallways in campus, there are directional arrows on each half of the walkway.
- When walking in the hall, all should do their best to maintain social distancing.
- If you stop to speak with another person, move to the side or to an alternate area and remain socially distanced.
- When snacking during passing periods, students must physically distance in the Rose Garden or Jag Pad.
- Students may not share food.
 - Lunch Detention will be issued to students who violate these mitigation policies.
- There is NO running in the hallways



PASSING PERIOD EXPECTATIONS



- AJHS will follow a BLOCK schedule A/C(1,2,3) B/D(4,5,6) allowing for only two passing periods each day.
- The focus of passing periods (4 min) will be to get to the next class period – not socialization.
- AJHS Staff will direct students out of main hallways and remind students not to have physical contact.
- The number of students allowed in the restroom at one time will be limited to 3.
- AJHS Staff will provide water-bottle filling stations in the cafeteria all day. Students **MUST** bring a water bottle with them to school.



PASSING PERIOD EXPECTATIONS



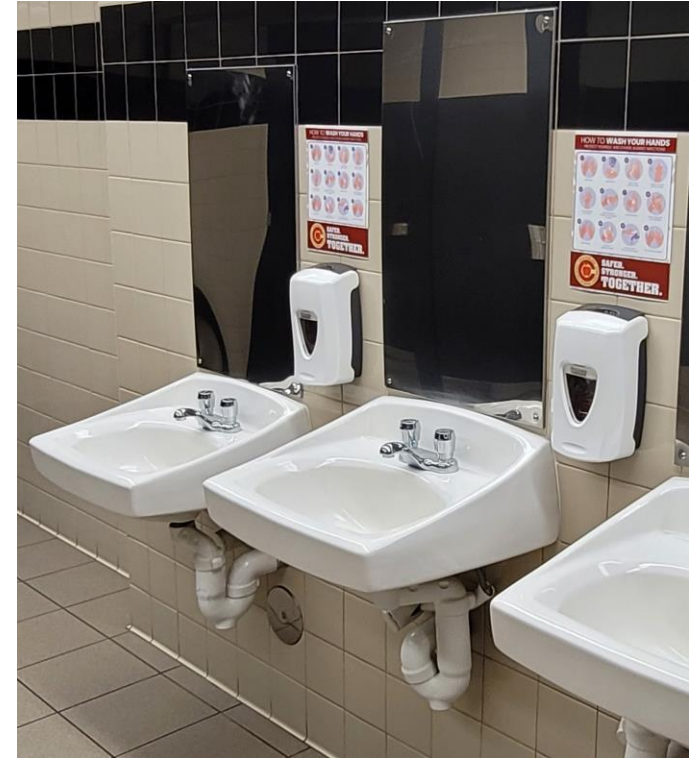
During passing periods, students will...

- Walk with purpose to your next class and wait outside their next period door.
- NOT congregate and socialize in main hallways.
- Adhere to limits on bathroom capacity of 3 and wait outside, if necessary.
- Avoid physical contact with other students (keep hands to self).
- Fill your water bottle in cafeteria as needed.
- When snacking during passing periods, students must physically distance in the Rose Garden or Jag Pad and may not share food.



BATHROOM EXPECTATIONS

- Students will be allowed to use the restroom before school, at lunch, during passing periods, and during class.
 - Excessive bathroom use during class will be reported to student's family and administration.
- To minimize students in restrooms, each teacher will send 1 boy and 1 girl at a time.
- Before exiting, hand washing is required.
- Hand washing directions have been installed in all restrooms on campus.
- Teachers will NOT be using SHARED passes, but students will still sign out when leaving the classroom.



DRINKING WATER ACCESS

- Currently, all drinking fountains have been closed.
- All students must bring a water bottle with them daily.
 - Please label water bottle with students first and last name.
- Water bottles may not be shared and only water is allowed in classrooms.
- Water bottles can be refilled throughout the day in the Cafeteria





CLEANING / SANITATION

HAND WASHING & SANITIZING



- All students and staff will wash their hands or use hand sanitizer when entering and exiting classrooms or campus buildings.
- At all entrances to classrooms and buildings, hand sanitizer stations have been installed.
- Students may carry individual sized hand sanitizer for personal use throughout the school day.



CLEANING & SANITIZING (LARGE AREAS)

- Custodians will clean and disinfect all high touch areas in their areas routinely throughout the day.
- All large areas that will be cleaned & disinfected by custodial staff:
 - Gym
 - Lockers rooms
 - Wrestling room
 - Outdoor athletic areas (benches, dugouts, ect.)
 - Lobby
 - Bathrooms
 - Wrestling room
 - Cafeteria
- Classrooms will be cleaned nightly by custodial staff



CLEANING & SANITIZING (CLASSROOMS)

- Classrooms will be cleaned nightly by custodial staff
- High touch classroom areas will be sanitized at the end of all classes.
 - Students may volunteer to help with cleaning in classrooms.
 - Teachers will provide directions and supervise student volunteers.
- Areas in Classroom that will be disinfected each period:
 - Desk
 - Chairs
 - Doorknobs
 - Light switches
 - Shared supplies
 - Shared technology
- All classrooms have two spray bottles and multiple rags. (Rags will be routinely laundered)



CLEANING & SANITIZING (SUPPLIES)

- When possible, students will be provided individual supplies in their classroom.
- Teachers will review expectations for shared supplies.
- Students may not share any personal items and should come prepared each day with the following items:
 - Pencil and pen
 - Paper
 - Water bottle
 - Earbuds
 - Colored pencils
 - Individual hand sanitizer
- It is expected that all students do not touch their peer's supplies or personal items.





LUNCH

JAG PAD

- Before leaving classrooms, students will use sanitizer.
- Students who brought lunch from home do not need to enter the cafeteria. After students receive lunch in the cafeteria, they can bring food to the Jag Pad.
- Students can either sit at seats at designated tables or in open areas on the Jag Pad socially distanced from other students.
- Students must be SEATED and actively eating to remove mask.
- Students may NOT share food.



SOCIAL DISTANCING



ONLY 2 STUDENTS AT EACH TABLE



TABLES

- Tables and benches will be sanitized throughout lunch periods and again after all lunches are complete.
- Students will be allowed to sit on either end of the table and should remain socially distanced from other students while eating.
- Students are responsible to clean up their own trash before leaving.

LIBRARY

- Social Distance/Masks required
- Direction arrows have been placed at the entrance/exit. Please enter and exit through the marked doors.
- During lunch, the library capacity will be limited to maintain social distancing.
- Students who choose to play games with shared items must use hand sanitizer before and after use.
 - Students will also be required to sanitize games after use.
 - Limited Games will be available
- Computer access is available and will be sanitized after each use.

ELA Visits/ Student Book Check Out

- All returned books will be cleaned before being re-shelved.
- ELA classes come in once during the quarter for short book talk/book check in/out
 - The library is closed at lunch for the first few days to allow for these classes to come in/out
- Individual browsers can come in with library pass.





AFTER SCHOOL

AFTER SCHOOL



- Students will be released at staggered times to limit number of students in the hallways.
- Students must wear a mask until they are off campus, picked up, or after they exit a bus.
- Walkers/Bike riders – released 3 minutes prior to the bell. Students must exit through bike gate or front office gate.
- All other students released at the dismissal bell.
- Band/Orchestra/Guitar students will exit through back classroom doors.
- Students participating in extracurricular activities need to report directly to designated location.
- Pick up students will use the front office gate and bus students exit through the bus gate.



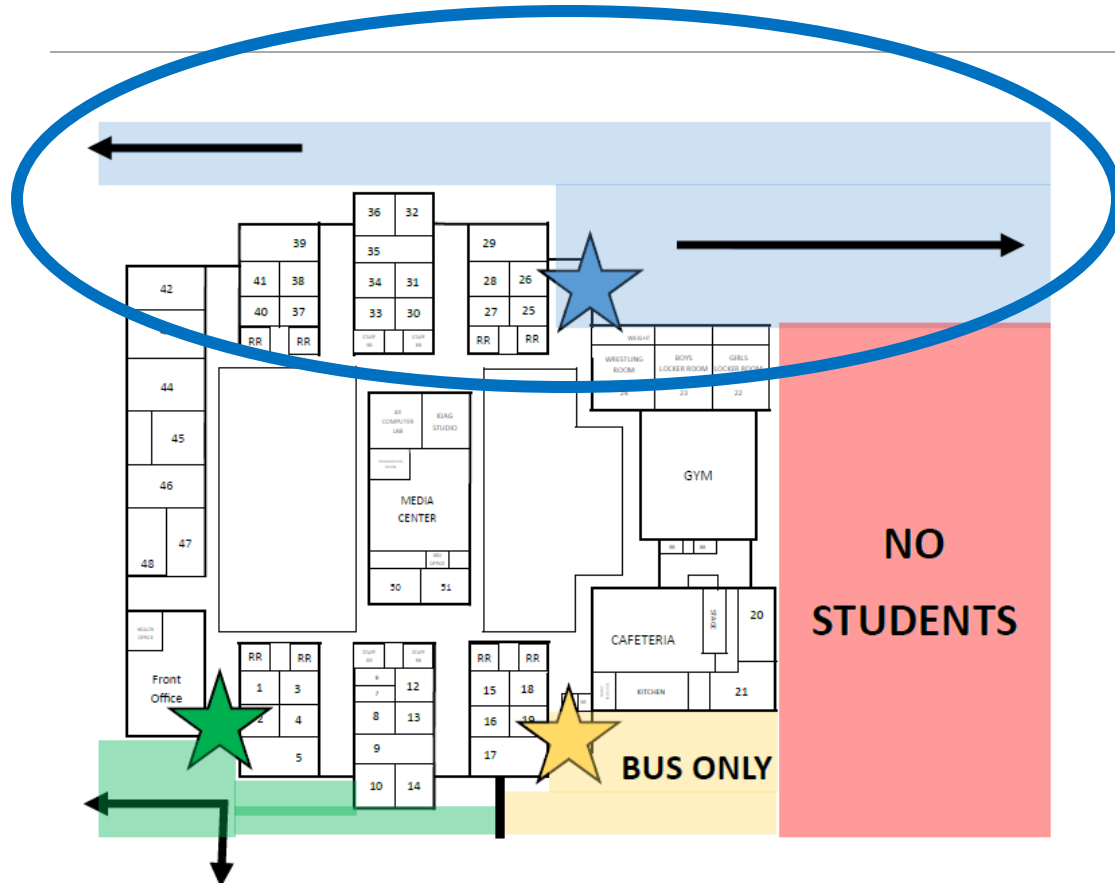
AFTER SCHOOL (BUS)



- When bus students exit, they will check the bus board to find the location of their bus.
- If a student's bus is on the ramp, students immediately board the bus with their ID visible for the bus driver.
- If the student's bus has not arrived, they will find the board with their bus route and line up socially distanced from other students in their designated area.
- Students who do not ride buses may not be in this area at any time.



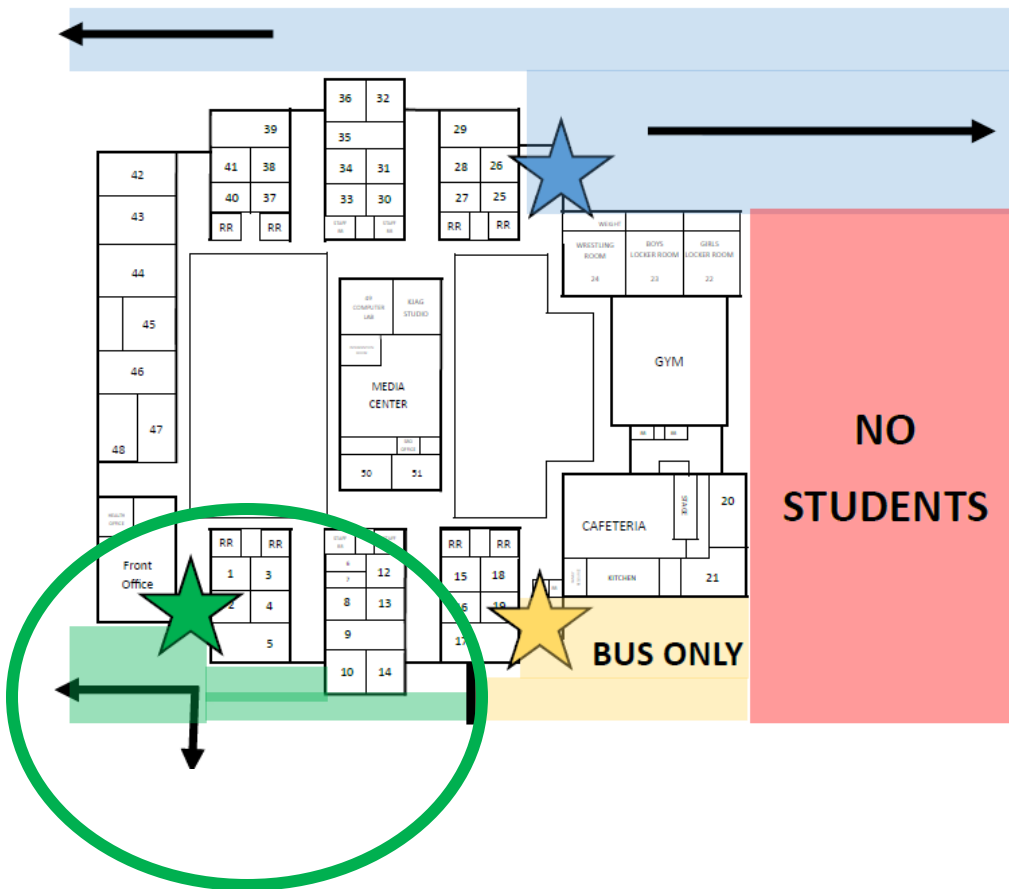
AFTER SCHOOL (BIKE)



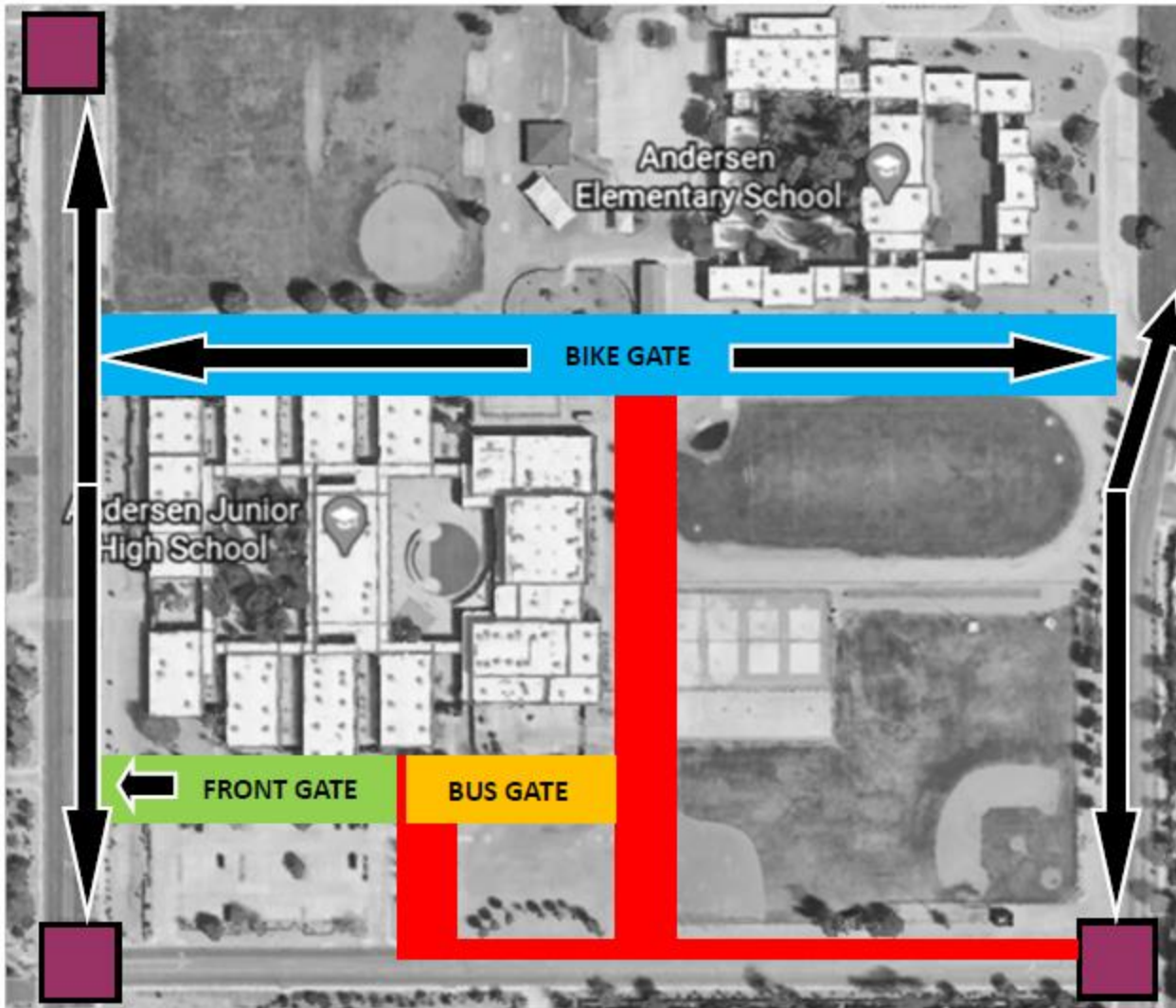
- Bike gate is for students walking east or west of campus, as well as any student with a bike.
- Students going east will walk through the football field to Pennington Rd.
- Students going west will walk through the gate to Dobson Rd. and use crosswalk at Ironwood if going south, or Knox if going west as needed.
- No students will be allowed to cross the street outside of crosswalks or exit through the bus loading area.



AFTER SCHOOL (FRONT)



- Front gate is for students walking south or west of campus, as well as students being picked up.
- PICK UP – Students will wait in the safe zone marked with cones in front of school. Students will remain social distanced while waiting and must wait until their ride pulls into the safe zone.
- WALKERS – Students will walk to the sidewalk along Dobson Rd. and use crosswalk at Ironwood if going south, or Knox if going west.
- No students will be allowed to cross the street outside of crosswalks or exit through the bus loading area.



AFTER SCHOOL (MAP)

BIKE GATE EXIT

FRONT GATE EXIT

BUS GATE EXIT

NO STUDENTS ALLOWED

CROSSWALKS



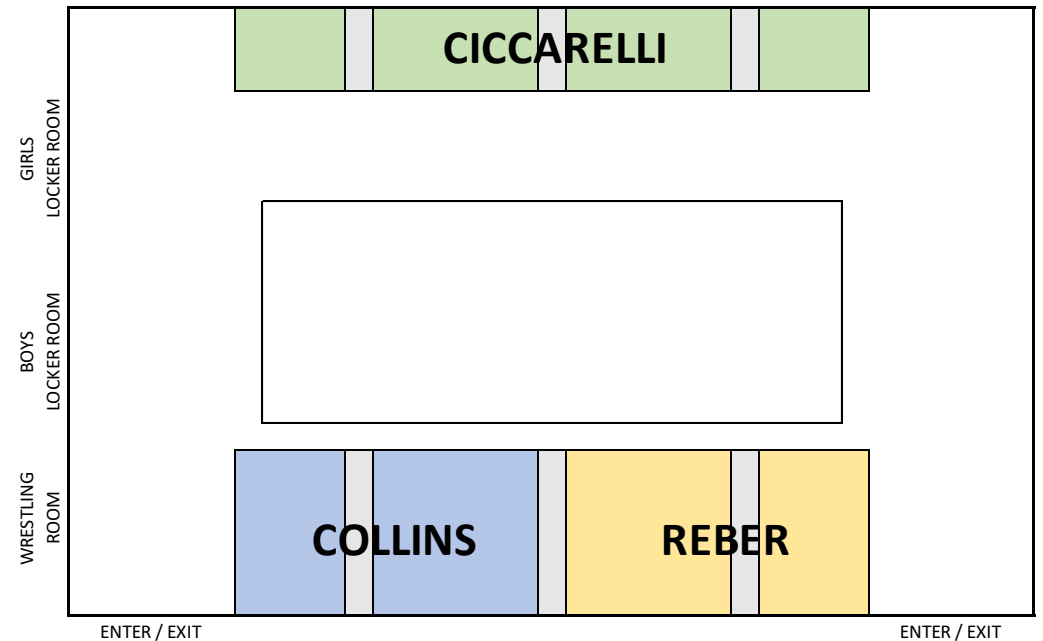
ELECTIVE SOPs

PE/WEIGHTS/YOGA

- All students are required to wear a mask at all times.
- Shared equipment will be limited
 - All equipment must be disinfected between uses.
 - This includes disinfecting weight room equipment between uses.
- Teachers will provide low intensity activities when teaching in confined spaces.
- Clearly marked spots will aid students in maintaining spacing requirements.
- When weather permits, physical education classes will be held outdoors to maximize physical distancing.
- Teachers will focus on individual pursuits, skills, games and activities rather than traditional physical contact team sports.
- All students are required to wear athletic clothing and non-marking shoes that tie.
- Students will come to school dressed in clothes that are appropriate for participation in physical education.
 - Locker rooms will be limited and only for students who did NOT come dressed for PE.
 - PE/Weights/Yoga students will not use lockers.
- Yoga students may bring their own Yoga Mat.
- No food or drink is allowed in the gym, including gum, at any time other than water.
- All PE/Weights/Yoga students will need to bring an individual water bottle and may refill them at water stations designated by teachers.

LOCKER ROOM ACCESS (PE)

- Students will enter the gym and go to designated seats in the bleachers located in their teacher's section.
- There will be a teacher inside each locker room and one in the gym for supervision.
- Students will only go into the locker room to change if needed and backpacks will remain with students.
- Students in the locker room will remain socially distant and are not allowed to share any items.
- If a student needs clothing they should communicate with teacher and will receive clean clothing.
- At the end of class, students will be allowed in the locker room with teacher supervision and should exit in a timely manner.



CHOIR

- All students and staff are required to wear mask in Choir.
- Classes may be held outdoors, weather permitting, to assist with distancing students.
- Clearly mark spots to aid students in maintaining spacing requirements.
- Choral students should have their own well-fitted masks which allow for proper vowel formation while keeping the mouth and nose covered.
- Students should face predominantly towards the front of the classroom to limit exposure from viral particles.
 - Straight rows in music classrooms will allow for more space between students than the traditional arch shape.
- Limit shared materials.
 - Shared materials must be disinfected between uses.
- Rehearsals should be limited to 30 minutes of sound production (playing or singing).

BAND


- Wind instrumental students should have masks with slits at the mouth to fit mouthpieces for playing their instruments only. At all other times when not playing, the students should wear a well-fitted mask that covers nose and mouth. (NAfME and NFHS). AJHS will provide wind instrument students with one slitted mask.
- Bell covers are recommended and will be provided by AJHS.
- No shared instruments
- No shared music and no shared stands
- Clearly mark spots to aid students in maintaining spacing requirements.
- Students should face predominantly towards the front of the classroom to limit exposure from viral particles.
- Straight rows in music classrooms will allow for more space between students than the traditional arch shape.
- Limit shared materials.
 - Shared materials must be disinfected between uses.
- Rehearsals should be limited to 30 minutes of sound production (playing or singing).
- Band students will enter through the Cafeteria and exit through the GYM Lobby.

ORCHESTRA/GUITAR

- No shared instruments
- No shared music and no shared stands
- Clearly mark spots to aid students in maintaining spacing requirements
- Safely play instruments indoors by having all students participate in social distancing and wear masks
- Students should face predominantly towards the front of the classroom to limit exposure from viral particles.
 - Straight rows in music classrooms will allow for more space between students than the traditional arch shape.
- Limit shared materials.
 - Shared materials must be disinfected between uses.
- National guidelines do not restrict Orchestra/Guitar playing times.
- Orchestra/Guitar students will enter through the Cafeteria and exit through the GYM Lobby.

VISUAL ARTS/FACS/PLTW

- All students and staff are required to wear masks at all times.
- No equipment or limited use of equipment that cannot be disinfected.
- Establish protocols and practices for safe use and storage of materials and projects.
- Tables and stools should be wiped down between classes.
- High touch, shared surfaces, and equipment need to be cleaned and sanitized between student uses.
- Limit shared materials
 - Shared materials must be disinfected between uses.
- Students in these classes are asked to bring their own ruler and pencil sharpener (with case to hold shavings)



GENERAL BEST PRACTICES

GENERAL BEST PRACTICES

CONTINUE TO PRACTICE GOOD HYGIENE

- Wash your hands with soap and water or use hand sanitizer, especially after touching frequently used items or surfaces.
- Avoid touching your face
- Sneeze or cough into a tissue, or the inside of your elbow
- Discouraging Spitting
- Disinfect frequently used items and surfaces as much as possible
- Cloth face coverings required on AJHS campus

PEOPLE WHO FEEL SICK SHOULD STAY HOME

- Do not go to work or school
- Contact and follow the advice of your medical provider
- Do not come to practice
- Avoid contact with other team members
- Do not return to practice until they have met CDC's criteria to stop home isolation and are cleared by physician and athletic training staff if available

