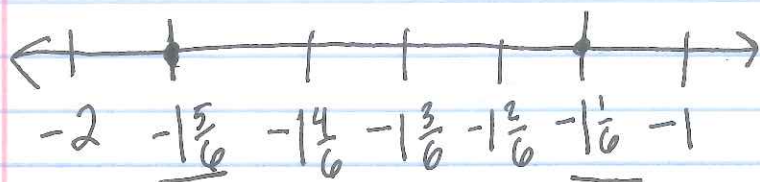


## Lesson 4.2 Compare and Order Rational Numbers

Objective: To compare and order rational numbers.

Ex. 1 Fill in the  $\bigcirc$  with  $<$ ,  $>$ ,  $=$  to make  $-1\frac{5}{6} \bigcirc -1\frac{1}{6}$  a true statement.



The number line shows  $-1\frac{5}{6} < -1\frac{1}{6}$ .

Ex. 2 Fill in the  $\bigcirc$  with  $<$ ,  $>$ , or  $=$  to make  $\frac{7}{12} \bigcirc \frac{8}{18}$  a true statement.

LCD:  $12:12, 24, 36, 48, 60$        $\frac{7 \cdot 3}{12 \cdot 3} = \frac{21}{36}$        $\frac{8 \cdot 2}{18 \cdot 2} = \frac{16}{36}$   
 $18:18, 36, 54, 72, 90$

\* percent to decimal \*

$$\frac{21}{36} > \frac{16}{36} \text{ so } \boxed{\frac{7}{12} > \frac{8}{18}}$$

Ex. 3 Order the Set  $(3.44, \pi, 3.14, 3.\overline{4})$  in order from least to greatest.

Decimal to percent

$$3.440 \checkmark$$

$$3.140 \checkmark$$

$$\pi = 3.1415926 \checkmark$$

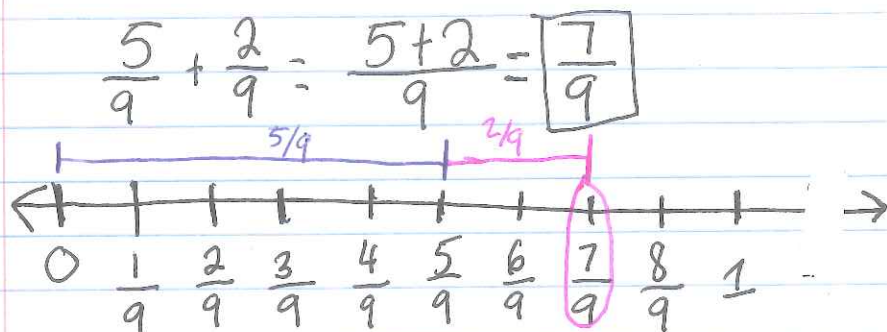
$$3.\overline{4} = 3.444 \checkmark$$

$$3.140, 3.141, 3.440, 3.444 ; \boxed{3.14, \pi, 3.44, 3.\overline{4}}$$

## Lesson 4.3 Add and Subtract LIKE Fractions

Objective: To add and subtract rational numbers, expressed as fractions.

Ex. 1 Add. Write in simplest form.



Ex. 2. Find  $-\frac{5}{8} - \frac{3}{8}$ .

$$\begin{array}{r} -\frac{5}{8} - \frac{3}{8} \quad * \text{Keep, Change, Change} * \\ \downarrow \downarrow \downarrow \\ -\frac{5}{8} + \left(-\frac{3}{8}\right) = \frac{-5+(-3)}{8} = \boxed{\frac{-8}{8} = -1} \end{array}$$

Ex. 3. About  $\frac{6}{100}$  of the U.S. population lives in Florida. Another  $\frac{4}{100}$  lives in Ohio. About what fraction more of the U.S. population lives in Florida than Ohio.

$$\frac{6}{100} - \frac{4}{100} = \frac{6}{100} + \left(\frac{-4}{100}\right) = \frac{6+(-4)}{100} = \frac{2}{100} = \frac{1}{50}$$

About  $\frac{1}{50}$  more of the U.S. population lives in Florida than in Ohio.