



# NCAA ELIGIBILITY CENTER

- » **Who are we?** A unit within the NCAA.
- » **What do we provide?** Certification of college-bound student-athletes for collegiate competition.
- » **What do we review?**
  - Academic requirements.
  - Amateurism requirements.





# NCAA SPORTS

## FALL SPORTS

**MEN:**

Cross Country  
Football  
Soccer  
Water Polo

**WOMEN:**

Cross Country  
Field Hockey  
Soccer  
Volleyball

## WINTER SPORTS

**MEN:**

Basketball  
Fencing  
Gymnastics  
Ice Hockey  
Indoor Track and Field  
Rifle  
Skiing  
Swimming and Diving  
Wrestling

**WOMEN:**

Basketball  
Bowling  
Fencing  
Gymnastics  
Ice Hockey  
Indoor Track and Field  
Rifle  
Skiing  
Swimming and Diving

## SPRING SPORTS

**MEN:**

Baseball  
Golf  
Lacrosse  
Outdoor Track and Field  
Tennis  
Volleyball

**WOMEN:**

Beach Volleyball  
Golf  
Lacrosse  
Outdoor Track and Field  
Rowing  
Softball  
Tennis  
Water Polo

## EMERGING SPORTS

**WOMEN:**

Acrobatics and Tumbling  
Equestrian (Divisions I and II only)  
Rugby  
Stunt (Division II only)  
Triathlon  
Wrestling

# THREE REQUIREMENTS TO PLAY COLLEGE SPORTS



**High School  
Graduation**



**NCAA  
Initial Eligibility**



**College  
Admission**

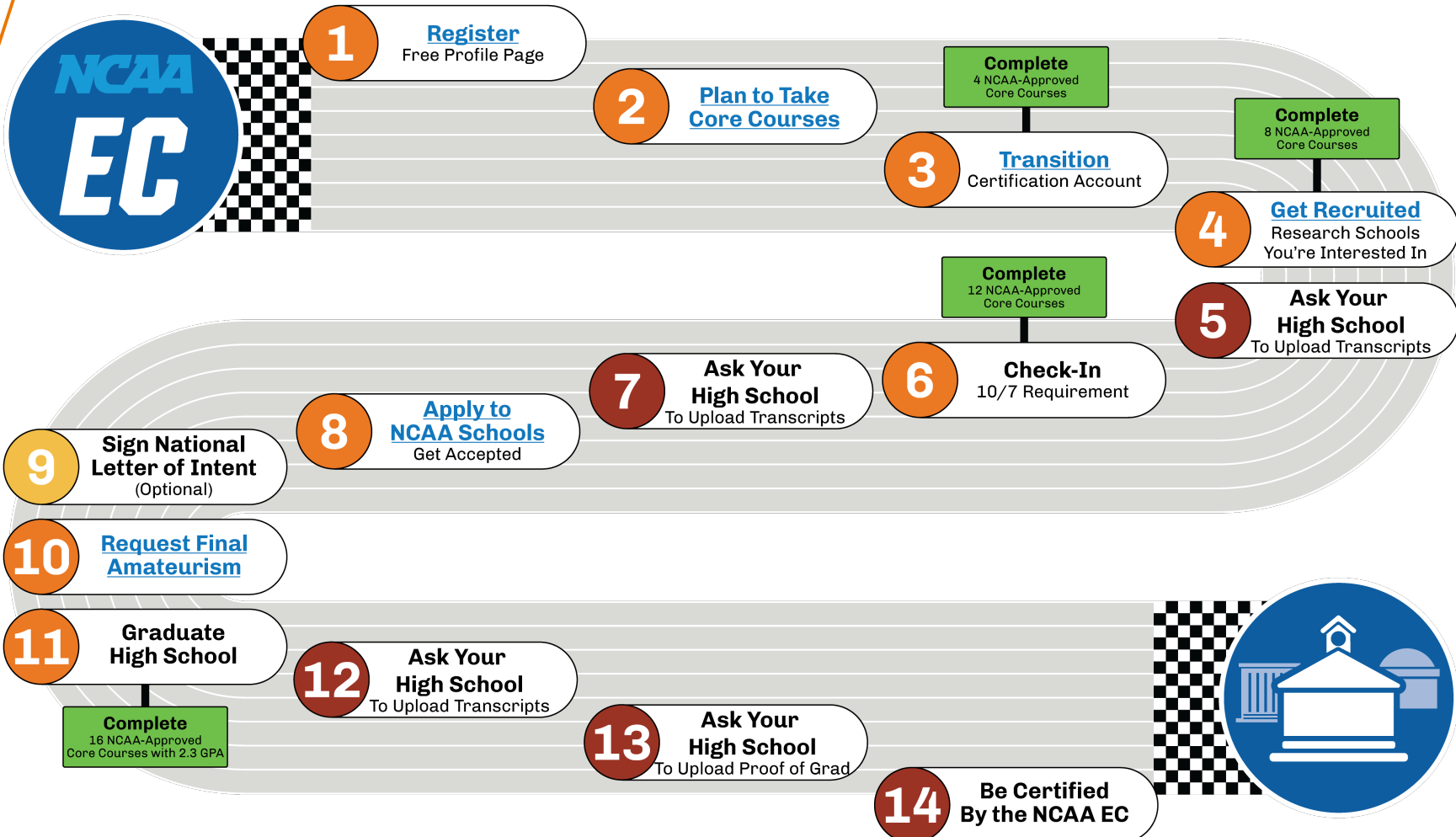


## COLLEGE ADMISSION

- » Apply and be accepted to the NCAA school before you can compete.
  - NCAA certification does **NOT** include acceptance to the NCAA school recruiting you.
- » Ask college admission about:
  - Cost of attendance.
  - Financial aid.
  - Standardized test scores.
    - > May be required for college admission or scholarships.
    - > NOT required for NCAA certification.
  - For more questions to ask, visit [on.ncaa.com/ChoosingCollege](https://on.ncaa.com/ChoosingCollege).



# KEEP YOUR CERTIFICATION ON TRACK



# NCAA REGISTRATION IS REQUIRED

## Three Account Types



**Free Profile Page  
Account**



**Academic  
and Amateurism  
Certification Account**



**Amateurism-Only  
Certification Account**



# FREE PROFILE PAGE ACCOUNT

## Account Type #1



The right place to start for most students!

- » Not sure in which division you plan to compete.
- » Domestic students planning to compete at a [Division III school](#).
- » Registering in an NCAA-certified nonscholastic basketball event ([BBCS](#), ECAG, AAU).



No registration fee.



[Transition](#) to the right [certification account](#) at any time.



# ACADEMIC AND AMATEURISM CERTIFICATION ACCOUNT

## Account Type #2



Required to compete at a Division I or II school.

- » Go on [official visits](#).
- » Sign a [National Letter of Intent](#).
- » Receive an athletics scholarship.



Registration fee:

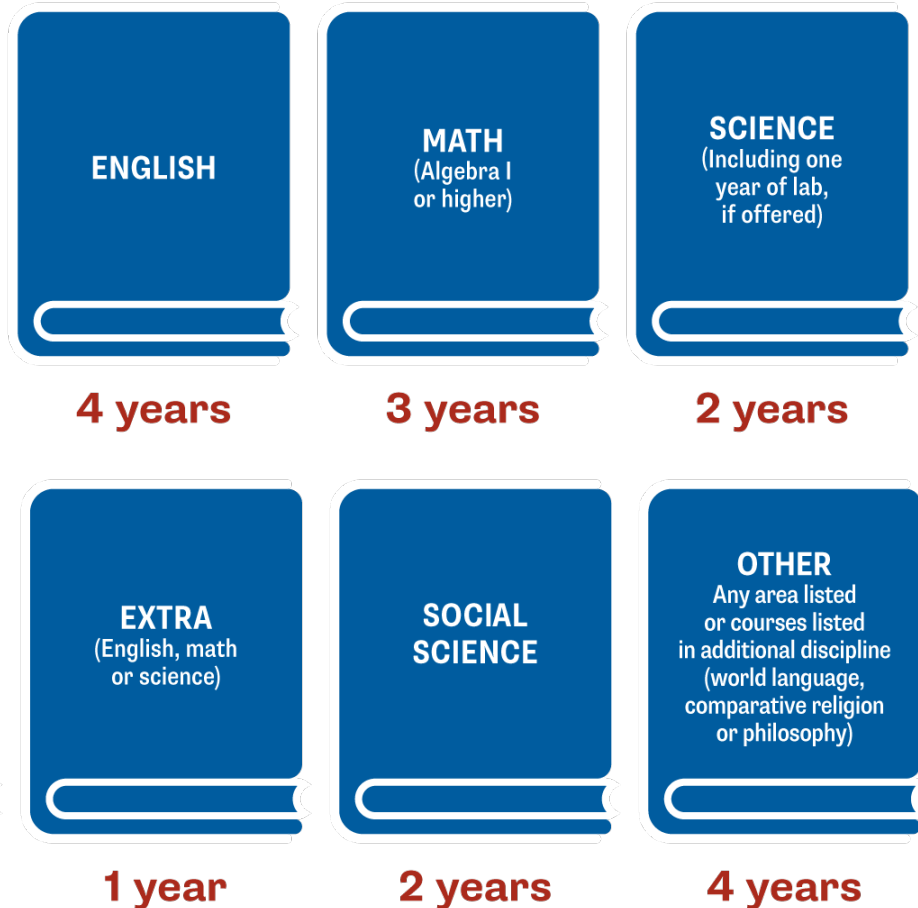
- » [Domestic students](#): \$100.
- » [International students](#): \$160.

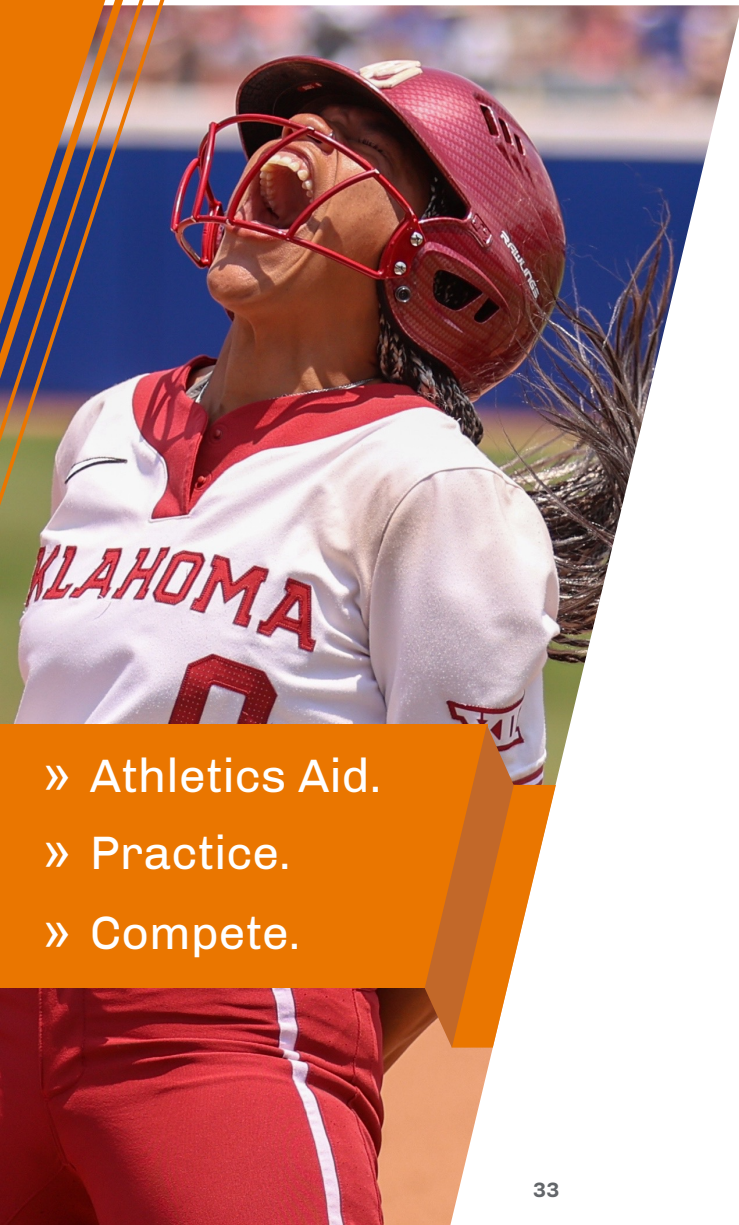




# DIVISION I: 16 CORE-COURSE UNITS

Complete 16 core-course units in eight academic semesters.





# DIVISION I: QUALIFIER



Complete 16 core-course units in the required subject areas.



Meet core-course progression before the seventh semester.

**Note:** Students certified based solely on international credentials are exempt from core-course progression.



Earn a core-course GPA  $\geq 2.3$  in the required subject areas.



Submit proof of graduation to the Eligibility Center.

- » Athletics Aid.
- » Practice.
- » Compete.



## DIVISION II: QUALIFIER



Complete 16 core-course units in the required subject areas.



Earn a core-course GPA  $\geq 2.2$  in the required subject areas.



Submit proof of graduation to the Eligibility Center.

- » Athletics Aid.
- » Practice.
- » Compete.



## DIVISION III

- » Each Division III school determines its own eligibility for:
  - Academic requirements.
  - Admission.
  - Financial aid.
- » **International student-athletes** who plan to compete at a Division III school must complete an NCAA Eligibility Center Amateurism-Only Certification account.
- » Domestic student-athletes who plan to compete at a Division III school may register for a free Profile Page account, but it is not required.



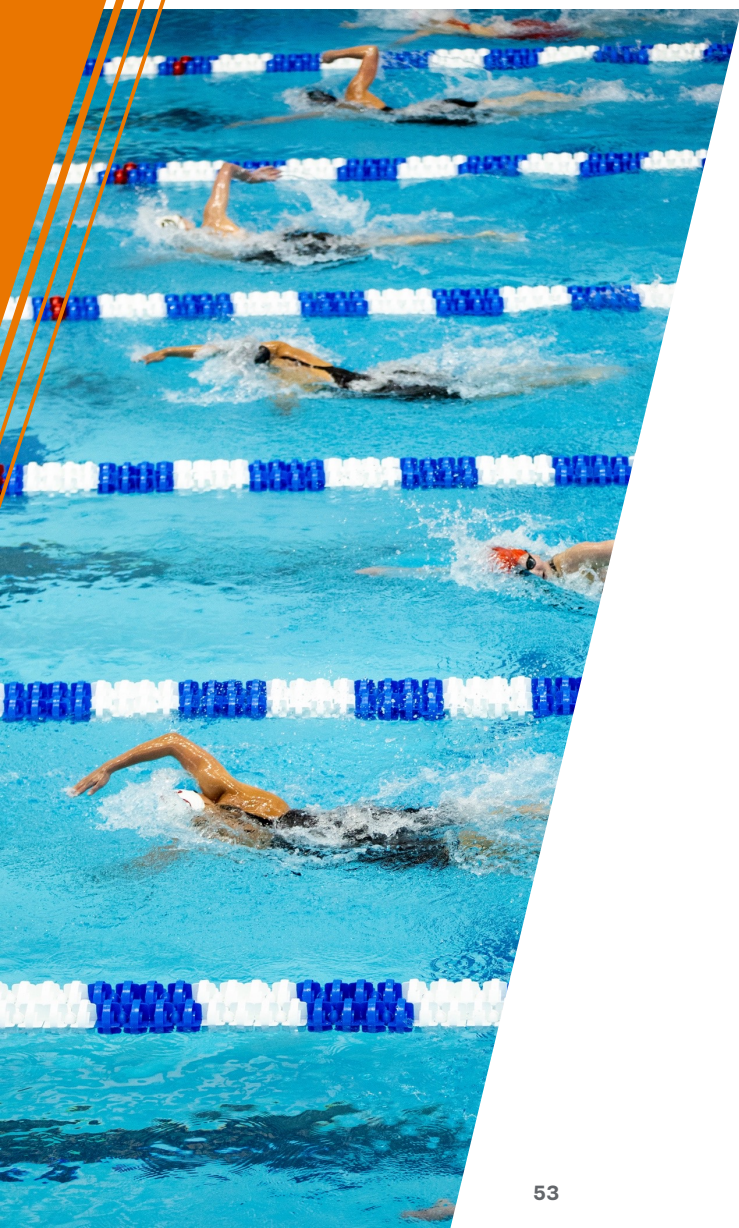
# INSTITUTIONAL REQUEST LIST

- » An IRL is a list of college-bound student-athletes an NCAA school is interested in recruiting.
  - You **must** be on an NCAA school's IRL to receive an Eligibility Center certification.
    - > Receive athletics aid.
    - > Practice.
    - > Compete.



## NAME, IMAGE AND LIKENESS

- » NCAA student-athletes can benefit from their NIL.
- » For more resources:
  - Visit [ncaa.org/nil](https://ncaa.org/nil).
  - Contact your state's High School Athletic Association for current legislation.
  - Contact your future NCAA school's compliance office.
  - Follow the Eligibility Center on [Twitter](#), [Instagram](#), [YouTube](#) and [Facebook](#).



# NATIONAL LETTER OF INTENT

- » By signing a NLI, you're agreeing to attend a Division I or II school for one academic year.
- » NLI is voluntary and ends the recruiting process.
- » Athletics financial aid is provided for a minimum of one academic year.
  - You must be admitted to the NCAA school.
  - You must be eligible for financial aid under NCAA rules.
- » For more NLI information, visit [nationalletter.org](http://nationalletter.org).