



WELCOME TO KINDERGARTEN

Patterson Kindergarten CTA

Mrs. Schmidt

2022-2023

PATTERSON INFORMATION

School Information

Principal

Ms. Sarah Stephens
Patterson Elementary
7520 S. Adora Blvd.
Gilbert, AZ 85298

Student Hours: 8:40 A.M. – 3:10 P.M.

Attendance line: (480) 224-3603 (call for absences)

****Please let your teacher know by email also.****

Absences & Tardies: If your child is going to be absent, please call the school at (480) 224-3600. If your child comes to school late, you must take them to the office for a tardy slip. We ask that you help your child get to school on time because instruction will start right away. School hours are from 8:40-3:10

*Make-up Work – If your child is absent, they can get their missed work the following day or you can pick it up from the front office. If they will be out for several days, contact your child's teacher to request work.

MEET YOUR TEACHER



Mrs.
Shelley
Schmidt

MY EDUCATION

I got my bachelor's degree from Ottawa University and I also have an early childhood endorsement

Contact Me

Room A4
(480) 224-3634
Schmidt.shelley@cusd80.com

About me

This is my 14th year at Patterson and my 18th year teaching, and I love being a part of the Pride! I am married and have three grown children, and recently became a grandma! I was born and raised right here in Chandler, Arizona.



BREAKFAST

Breakfast is served each morning for \$2 if your child chooses to go to the cafeteria. Please remind your child to go to the cafeteria before they come to the classroom. We do not go as a class. It is best to arrive at 8:15, so your child has enough time to eat.

LUNCH

Lunch is offered each day for \$3 or your child may bring their lunch from home. Please use a lunch box, as bags usually rip. Lunches from home will NOT be refrigerated at school. Please make sure your child is able to easily open and close all containers independently.

WATER BOTTLES

Students need to have a water bottle at school each day. Please make sure your child's name is on it. If you put ice in your child's water bottle or the water is frozen, please put the bottle in a holder or put a sock on it so that the condensation does not leak. Water bottles with straws are the best, as they don't spill as easily if tipped over. Only plain water is allowed in water bottles, no flavored water, juice, energy drinks, milk, etc. please. **Students should have a separate drink packed in their sack lunch.**

BIRTHDAYS

We will celebrate each student's birthday in class. If you would like to send something to share with the class, a goodie bag is the best choice. Any food in the goodie bag needs to be pre-packaged and store bought. We will have to send back any food items that do not meet this criteria. If you are unsure about an item, please contact your teacher. Please **NO CUPCAKES, DONUTS OR CAKE**. If you send in a treat, please be sure to include other items necessary (ie. plates, napkins, forks). We highly encourage alternatives to foods, like treat bags, special pencils, or party favors. If your child has a summer birthday or a birthday during the weeks that we are not in session, please contact your teacher to set up a day to celebrate.

You may either send in the birthday treats with your child in the morning or drop it off at the office before noon. Unfortunately, parents are not invited to our birthday celebrations to help ensure as little as possible learning time is missed.

Many parents have asked that we pass out party invitations and/or thank you notes to students in class. Please do not ask us to do this, even if you are inviting the whole class! Too many children have had their feelings hurt because they did not receive an invitation. Then we have to explain to a distraught child why they didn't receive an invitation. This is not fun! Please use our classroom directory as a resource to contact other parents to coordinate birthday parties, play dates, etc.

MORNING PROCEDURES

- BUS....Kinder students ride same bus as rest of the school. Arrangements must be made with CUSD Transportation.
- KIDS EXPRESS...If your child is registered through CUSD Community Education, you may drop off between 6:30 AM and 8:15 AM. Their staff will bring your child to our classroom at 8:15.
- PARENT DROP OFF (Students should be dropped off between 8:15 & 8:35)
 - Car Line – You stay in your vehicle and drop your child off through the car drop-off line behind the school. Staff will be there to assist.
 - Students walking to school will enter at the gates in the front of the school. Staff will be there to meet them and guide them in the correct direction to their classroom.

****On the first day of school ONLY, you will be allowed to walk your child to our classroom to drop them off in the morning. Feel free to come in and take pictures, etc. In the cafeteria, there will be a PTO sponsored, “Boo Hoo” Breakfast for parents after you drop off your child in their classroom.**

AFTERNOON PROCEDURES

- BUS....Staff will make sure your child gets on the correct bus.
- KIDS EXPRESS...Staff will make sure your child gets to KE and you can pick up until 6:30.

- PARENT PICK UP

-Car Line – During car pick up, please pull up as far as you can. Please do not get out of your car to open doors or to buckle your child. This helps us keep the line moving as quickly as possible. Also, teach your child what color/type of car you drive, so they can help us spot you more quickly.

-Walk with Parent – The gate by the bike rack will open at 3:00 for kinder parents only. Please be prompt or your child will be taken back inside at 3:05.

-Walk with Sibling– If your kinder is walking with an older sibling, the sibling will come to our hallway after school to pick them up.

Please remember to contact the school/teacher if there is ANY change to your daily routine of how your child leaves school. We ask that you begin the school year (day one) with the transportation plan you intend to use so that children may establish a routine as soon as possible. Kindergarteners need to know and practice their schedule to avoid unwarranted anxiety about where to go.

Star of The Week

For one week this year, each kinder will get to be the star student. Students are chosen based on their behavior. Throughout their week as star student there will be special activities to celebrate your child. Information will be sent home when it is your child's turn to be star student.

SNACKS

Your kinder will be asked to bring a healthy snack each day. Snacks should be nutritional (high in fiber and/or protein and low in sugar) to help the children through the afternoon, since we have an early lunch time. Snack ideas: fruit (bananas, apples, clementines), vegetables (carrots, snap peas), granola bars, pretzels, goldfish crackers, cheese crackers, raisins, popcorn, dry cereal, yogurt, cheese.

Please do not send in: fruit snacks, candy, chips, cookies, junk food, etc.

Due to allergies, diet preferences and cleanliness, food may not be shared by students.

Grading Policy

Kindergarten Grading Scale – E – 90-100%

S – 75-89%

I – 60-74%

N – 59% and below

- **Infinite Campus**

All grades can be viewed on Infinite Campus. Register for the parent portal at <http://www.cusd80.com/Domain/5058>. You will have the opportunity to print progress reports and report cards through Infinite Campus as you wish.

- **Tests** - There will not be retakes on assignments or tests. There will be many grades given in each subject area, so one low grade will not affect their overall score.

Make
-THE-
Grade

CLASSROOM MANAGEMENT

At Patterson we hold high expectations for both academics and behavior. As a kindergarten team, we have just a few rules that the students have been taught and are expected to follow. Students must: raise their hands to speak, follow line procedures, keep hands and feet to themselves, be active listeners, and use appropriate talk levels.

If a rule is broken, a verbal reminder is given. If the rule is broken again, the student will bring home a note and a consequence will be given at school. You will need to sign and return it the next day.

Of course, we love to take the time needed to reinforce positive behaviors in the classroom rather than focus all of our attention on the negative. If a student is “caught” doing something good, then the student is rewarded with a “GOLDEN” ticket or a special note home.

MATH

During the first quarter, we will be reviewing kindergarten standards as we begin working through our Saxon First Grade Curriculum.

- *Recognize and write numbers 1-120
- *Add and subtract within 100
- *Two-digit addition
- *Count to 120 by 1's, 2's, 5's, & 10's
- *Place Value
- *Geometry (identify and compose 2D & 3D shapes)
- *Fractions
- *Time (to the hour and half hour)
- *Money (identifying & counting coins)
- *Measurement
- *Graphs

LANGUAGE ARTS

CTA (1/2 year accelerated)

Phonics – Spalding

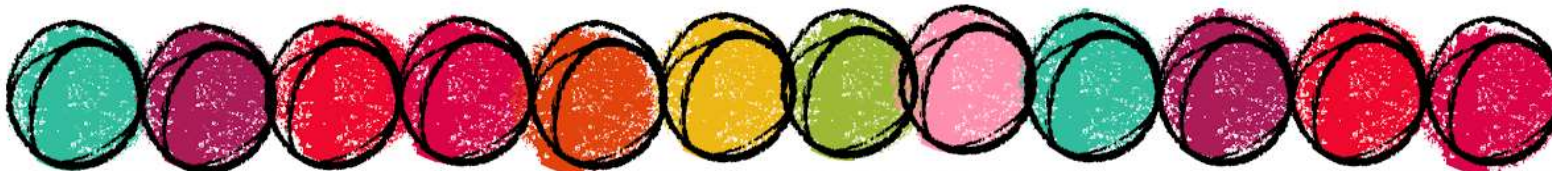
- 70 phonograms
- Weekly assessments of 20 phonograms
- Weekly assessments of 15 spelling words
- Phonemic awareness

Reading & Grammar – Into Reading & Spalding

- Reading Comprehension (setting, characters, plot, retelling, predictions)
- Fluency
- Vocabulary
- Grammar

Writing –Write From the Beginning, Into Reading, & Spalding

- Thinking maps
- Create opinion, narrative, and informative writing
- Weekly sentence writing assessments



LANGUAGE ARTS AT HOME MATERIALS

As part of homework each night, your kinder will be expected to review oral phonograms. Phonogram cards are available at www.spalding.org. When practicing with the phonogram cards, please flip the card from the back to the front. The expectation is for the students to say the sound(s) immediately after it is flipped.

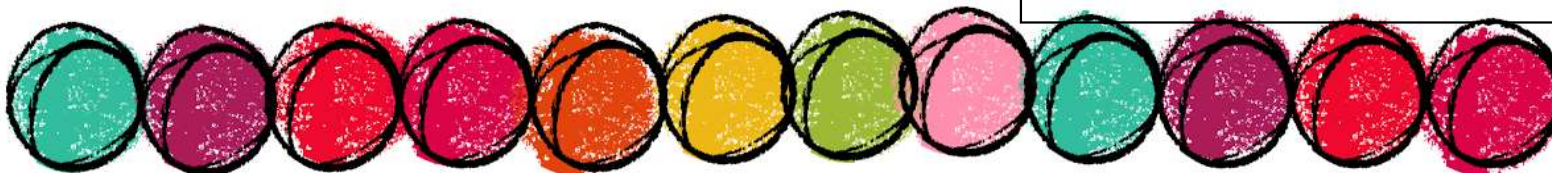
CTA

Spalding Phonogram Cards

Optional, but highly recommended
(Only one set needed per family that will be kept at home and used for nightly homework.)

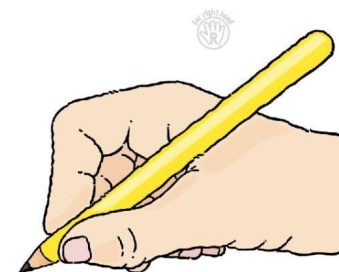
small individual set

Order at:
www.spalding.org



Pencil Grip

The middle finger and thumb form a vise for holding the pencil. The pointer finger rests between the thumb and middle finger. This should be used with crayons also.



Handwriting

- *All letters/numbers need to sit on the base line.
- *No letters/numbers touch the top line.
- *We will have a midpoint(dotted line) until 2ndquarter.
- *As we introduce and practice writing phonograms, you will slowly begin to see handwriting improve, including their names.
- *If your child is having trouble with fine motor skills, please ask your teacher to email you a packet of ways to strengthen your child's fingers.

SPECIALS

Students have 6-day rotation schedule of specials.

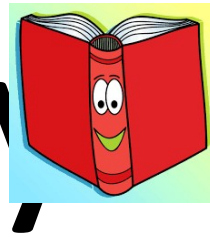
Students must wear tennis shoes on P.E. days.

A schedule will be sent home each quarter.

P.E.



libra

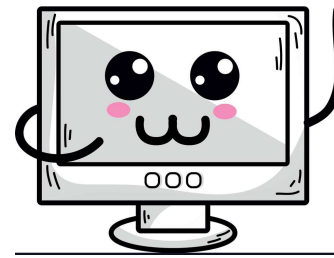


ry



music

technology



HOMWORK INFO.

- Your child will be assigned homework Monday-Thursday.
 - FIRST QUARTER – Packets will be sent home each Monday and is due Friday
 - SECOND-FOURTH QUARTERS - Homework will be assigned nightly rather than in a weekly packet.
- Homework will always be review work and will correlate with the grade level objectives.
- Your job is to monitor the comprehension of the homework. Accuracy along with neatness are prime indicators of excellent homework. *High expectations at home will reinforce the same standards at school.* Quality is more important than quantity.
- Please keep your child's homework in their binder so we can check progress each day.
- Homework time each night is about 20-30 “on task” minutes, in addition to 15 minutes of reading.





COMMUNICATION INFO.

Weekly Classroom Newsletters - emailed on Fridays.

Patterson Newsletters

Infinite Campus - access to grades anytime

Parent/Teacher Conferences - August & February

Important Info:

Dresses, Skirts, & Flip Flops

When your child wears a dress or a skirt, please have them wear shorts underneath. They sit on the floor with their legs crossed. We strongly encourage you to have your kinder wear shoes that adhere to the back of their feet. When kinders wear flip flops, they often trip in line and at recess. Flip flops also cause distraction at their desks, because they take them on and off.

Extra Clothes

Please use the ziploc bag on your child's desk to fill it with an extra set of clothing to keep at school in case your child has a bathroom or spilling accident.

Important Info:

- *To reinforce the safety of the kids, please do not drop off your student before 8:15.
- *MONEY!!!! - Please put ALL money that is sent to school in an envelope LABELED with your child's name and what the money is for. The envelope should be put in the plastic sleeve of your child's homework folder. If possible, a check is usually better than cash for the larger purchases like lunch money, school pictures, etc.
- *If your child is going to go home with another student, please email me. EX: "I give Susie Smith permission to pick up my son, Bobby Blue from school on August 5." If someone else is going to pick up your child, please make sure they are on the Emergency Contact Form, so they are authorized to take your child.
- *Try to have students bring their own projects, snacks, etc. with them in the morning vs. sending them to the office later.
- *All toys, games, etc. should be kept at home. Backpacks and folders should be emptied each night and ready for the school items the next day.

KINDERGARTEN FUN

Class Parties

Field Trips

100TH DAY

Teamwork

Family Projects

ABC

Countdown

School Presentations

Field

Day

Kindergarten Graduation

STEM Projects

Book

Fairs

Kindergarten Clubs

YOUR TAX CREDIT DOLLARS AT WORK

WHERE DO THE DONATIONS GO?

Tax Credit Donations go directly to Patterson and provide our students with many great opportunities for enrichment

These are just a few ways your donations make a difference in your child's education:

- Field trips For Every Grade: Art, Science and History Museums, Phoenix Zoo, Odysea Aquarium, Sonora Desert Museum, 6th grade Science Camp and many others. Each fieldtrip is based on state learning standards that coincide with current classroom lessons
- Assemblies : The Be Kind Crew in July and January
- Character Education
- Clubs: Chorus, Running Club, Spirit Line, Kindness Club, Coding Club, Battle of the Books, Spelling Bee and more!

Thank you for helping to make Patterson an AMAZING place to learn and grow.
Donations can be made through the CUSD website or your Infinite Campus "Fee Payment" link

Please feel free to call the office if you have questions: 480-224-3607

Arizona law ARS 43-1089.01 enables taxpayers a tax credit contribution of up to \$400.00 per calendar year if filing status is Married, filing Joint Return; \$200.00 per calendar year if filing status is Single or Head of Household; and, \$200.00 per calendar year if filing status is Married filing separate return — for contributions that fund extracurricular activities in public schools. A tax credit is a full refund, not a deduction.

Patterson Kindergarte n

Supplies

These are optional, but these are the supplies that your teacher hopes that your child will have on the first day of school.

- 3 packs of 24 count CRAYOLA crayons
- 1 pack of CRAYOLA “Twistable” colored pencils, not twistable crayons
- 1 CRAYOLA watercolors
- 1 pack of CRAYOLA markers (regular colors: red, orange, yellow, blue, etc.)
- 15 Ticonderoga pencils
- Plastic crayon box (big enough to fit 24 crayons, twistables, scissors, and glue)
- 12 Elmer’s glue sticks
- 1 inch “view” binder (The binders that have the plastic sleeve on the front.)
- Water bottle (no juice, milk, or flavored water)

*Students must be able to open and close by themselves and does not spill when tipped over. Bottles with straws are the best.

- Backpack (NO wheels OR luggage AND big enough to fit a 9 X 12 binder, 2 straps please)
- Tissues
- Headphones in a container
- BOYS – baby wipes GIRLS – Ziploc bags (any size)

Please have an extra set of clothing in your child’s backpack at all times for bathroom accidents and spilling accidents.



Welcome to our
Patterson Family



Questions?